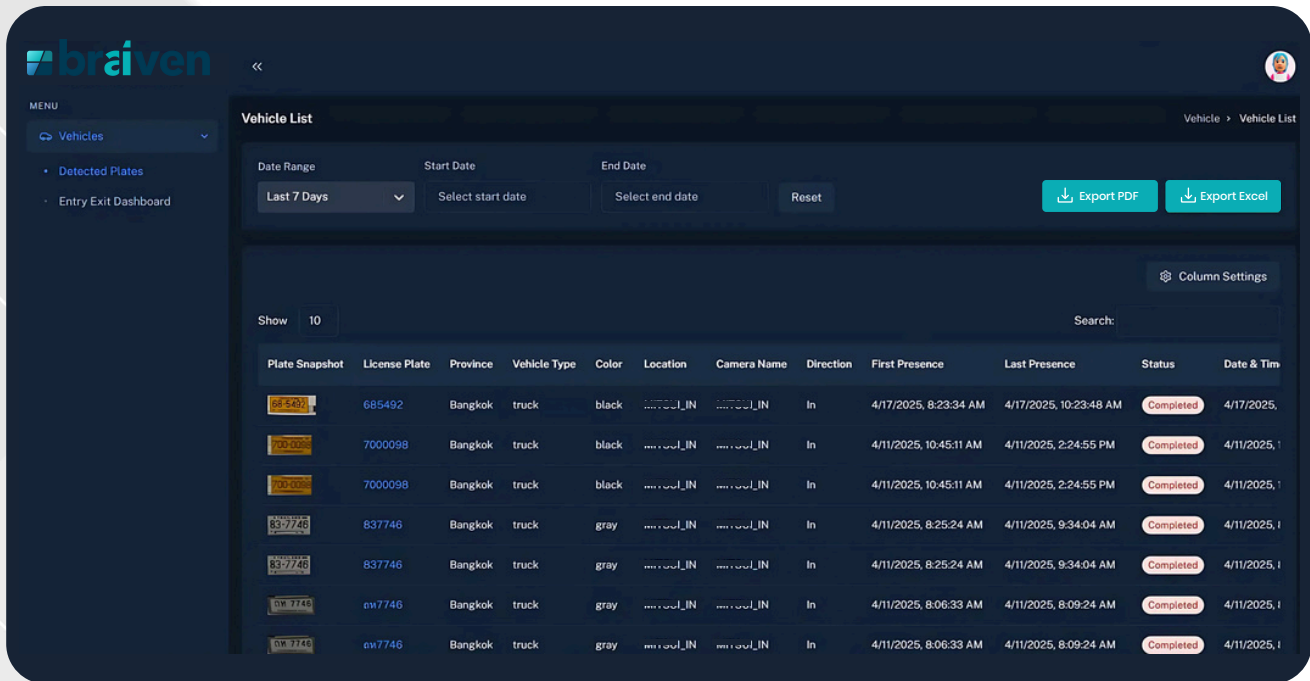




License Plate Recognition System

Real-time License Plate Recognition for Thai Vehicles



Braiven Plates is a powerful, AI-driven License Plate Recognition (LPR) solution designed specifically for Thai license plates. With advanced analytics and seamless integration, it supports real-time plate detection, vehicle insights, and system interoperability—helping you secure and manage vehicle access with confidence.

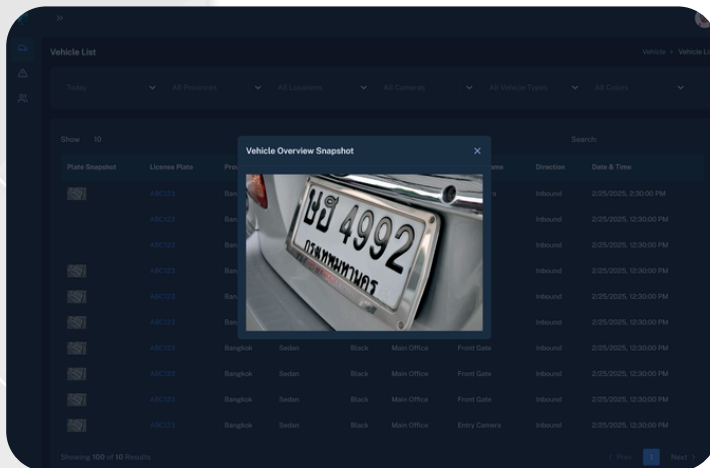
Built to meet industry standards, Braiven Plates is compatible with CCTV cameras from a wide range of brands, and its performance can be verified through the manufacturer’s website. The solution has passed standard testing and is delivered with full supporting documentation to ensure seamless integration and compliance.



Key Features

High Accuracy & Performance

- Recognize Thai license plates with up to 95% accuracy (based on internal benchmarks).
- Detect plates across multiple lanes using a single camera.
- Recognition does not affect current video streams.



Thai License Plate Support

- Supports standard Thai license formats issued by the Department of Land Transport.
- Detects:
 - License plate numbers and province
 - Plate color
 - Vehicle brand and color (daytime)
- Requires plates to be visible on front and rear.

Smart Detection and Alerts

- Immediate whitelist/blacklist alerts upon detection.
- Supports blacklist import and alert triggering.
- Backup camera support ensures continuous operation.

Powerful Data Logging

- Stores:
 - Plate image
 - Full vehicle image
 - Plate number, province
 - Vehicle brand and color
- All detection data exportable in Excel and PDF formats.
- Fully searchable vehicle database by full/partial plate or attributes.

The screenshot displays the 'braiven' interface for a 'Vehicle List'. A callout box highlights the 'Date Range' filter, which is currently set to 'Last 90 Days'. The table below shows a list of vehicles with columns for Plate Snapshot, License Plate, Province, Vehicle Type, Color, and Date & Time.

Plate Snapshot	License Plate	Province	Vehicle Type	Color	Date & Time
	843955	Samut Prakan	truck	black	3/9/2025, 2:47:44 PM
	752646	Bangkok	truck	black	3/9/2025, 7:11:53 AM
	646434	Bangkok	truck	black	3/8/2025, 1:14:12 PM
	646434	Bangkok	truck	black	3/8/2025, 1:10:25 PM
	833252	Samut Prakan	truck	gray	3/8/2025, 7:52:40 AM
	833252	Samut Prakan	truck	gray	3/8/2025, 6:41:23 AM
	833252	Bangkok	truck	black	3/7/2025, 3:54:07 PM

Flexible & Scalable Architecture

- No MAC address lock – licenses are transferable between cameras.
- Easy to expand licenses and add management/processing units.
- Compatible with various CCTV brands and Video Management Systems (VMS).
- Input custom metadata: driver info, vehicle notes, etc.

System Integration & Compatibility

Function	Description
Barrier Control	<ul style="list-style-type: none"> Automate gate operation using whitelist/blacklist rules
Remote Synchronization	<ul style="list-style-type: none"> Cloud-based vehicle list sync to local agents
Camera Compatibility	<ul style="list-style-type: none"> ONVIF-compliant cameras, H.264/H.265 via RTSP
Direction Analysis	<ul style="list-style-type: none"> Detects vehicle movement direction
Province Recognition	<ul style="list-style-type: none"> Thai province ID on license plates
Matching Rules	<ul style="list-style-type: none"> Customize detection for exact or partial plate match
Vehicle Attributes	<ul style="list-style-type: none"> Detects make, color, and body type (for cars)
Searchable Database	<ul style="list-style-type: none"> Advanced lookup by plate, color, province
Open Integration	<ul style="list-style-type: none"> JSON, REST, MQTT API for 3rd-party systems
Excel Export	<ul style="list-style-type: none"> Detection logs exportable with images
Software Compatibility	<ul style="list-style-type: none"> Works with recording systems and VMS
Server OS Support	<ul style="list-style-type: none"> Ubuntu LTS / Windows
Developer Tools	<ul style="list-style-type: none"> Includes SDK and API for integration